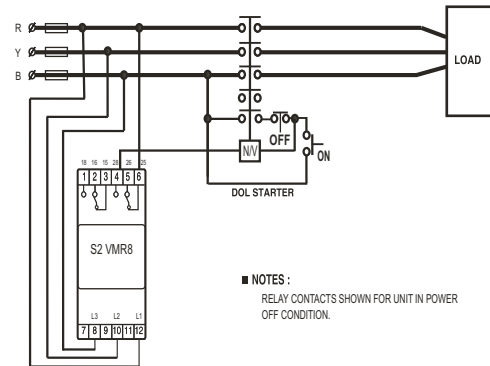


# TECHNICAL DATA SHEET FOR S2 VMR8



## PHASE FAILURE RELAY

\* Phase Failure condition, \* Phase sequence reversal condition, \* Phase Unbalance condition  
\* Under voltage condition, \* Over voltage condition.

### SPECIFICATIONS

PARAMETER	DESCRIPTION
1) System Supply Voltage	: 415VAC ± 20 %, 3 phase, 3 wire system
2) Auxiliary Supply Voltage	: In - Built from three phase.
3) Frequency	: 48 TO 63 HZ.
4) Power Consumption	: 12 VA @ 400 VAC and 25VA(Max.)
5) Output Relay Contacts	: 2 CO.
6) Output Contacts Rating	: 5 AMP, 240VAC [Resistive]
7) Trip setting (volts)	: Phase sequence- Yes : Phase Unbalance- 40V ±4V(10%±10% Of set value-fixed) : 85% of 415 V AC (fixed)
Under voltage For 380-440V AC For 220-240V AC For 100-120V AC	
Over voltage For 380-440V AC For 220-240V AC For 100-120V AC	: 110 % of 415 VAC (fixed)
8) Trip Time Delay * On phase sequence * On SP/UV/OV	: Instant for RP/OV : 3.5 ± 1.5 sec. Fixed for UB/SP/UV
9) P. ON / Reset Delay	: 180 Sec.
10) Set Accuracy * For UV & OV setting. * For UB setting. * For P. ON / Reset Delay	: ± 2 % Of Set Value : ± 4V Set Value : ± 18 Sec.
11) Resetting	: Auto Reset
12) Reset Gap * For UV & OV * For UB	: 12 ± 5V : 10V - 18V.
13) Indications * Power On (Green) * UB/RP (RED) * UV/OV (RED)	: ON : UB/RP ,steady for UB flashing for RP : UV/OV ,steady for UV flashing for OV
14) Insulation Resistance (at 500 VDC) * Between coil terminal and Contact terminal. * Between contact terminals of same polarity.	: 10M ohm : 10M ohm
15) High Voltage Capacity * Between terminals and mounting Plates.	: 2.5 K VAC / 50 Hz for 1 Sec.
16) Enclosure	: S2 Series, ABS / PC-ABS.
17) Dimensions ( mm ) * Overall * Mounting.	: 110 X 35 X 60 : Screw Mounting.
18) Weight(Approx.)	: 150 gms.
19) Operating Conditions * Temperature * Humidity	: - 5 °C TO + 60°C : UP TO 95 % Rh.

### Suitable for monitoring 3 Ph. System supply from MAINS & used by motor load:

·AC & R Chiller compressor motors, ·AHU Fan /Pump Motors, ·Machinery using multiple small motors  
·MAIN powers supply distribution panel board, ·DG Set application, ·UPS, ·Submersible Pumps, ·Hoist & Crane.

### Our Other Products

Alarm Annunciator, Motor/Pump Protection Relays, EOCR,  
Phase Failure Relay + UV / OV Relays, Voltage/Current/ Frequency/Reverse Power Monitoring Relays,  
Earth Fault/ Leakage Relays, Pump Automation Management system & Controllers, Water Level Controller,  
Electronic Timers, Power Line Transducers (V/I/KW/Multi-function/DC-DC Isolators or Barrier/Temp/Resistance/Tap position etc.),  
Multi-function Meter, Twin Window/Split AC Controller, Bearing temp Monitoring relays(PT-100)