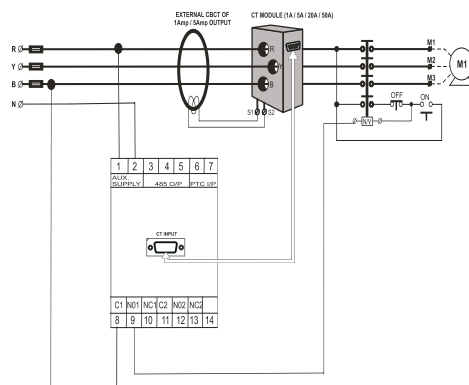


TECHNICAL DATA SHEET FOR F3 MPR1

MOTOR PROTECTION RELAY

minilec®



FEATURES

Microprocessor based Sensing current and temperature. Protecting against Phase Failure, Unbalance, Phase sequence, overloading, earth fault, winding over temperature, Over current / short circuit, locked rotor, Auto / Manual resetting, Adjustable trip setting for UC/OC, O/L, Locked rotor and earth fault. On Delay & start-up delay adjustable, 2 X 1CO output relays and serial communication port.

TECHNICAL SPECIFICATIONS

System Supply Voltage	220-440 V AC \pm 20%,
Auxiliary Supply Voltage	90-270 V AC (45-65Hz) / DC, 24V DC
Output Relay Contact	2 CO (5Amp, 230V AC Resistive)
Serial Communication	Provision of RS 485 Output (Optional)
Input	External CTS (CT1/CT2.5/CT5/CT20/CT50)

Trip Setting	Protection Parameter	Setting Range	Trip Delay	LCD Display	Resetting Mode
	Over load Trip Setting As per IDMTL char	2/5/10/15/20 Sec	N.A.	Over Load	Manual
	Unbalance Trip Setting	20% - 60%	1-10 Sec	Current UB	Manual/Multi Attempt
	Phase Failure	N.A.	1-10 Sec	Current S.P.	Manual
	Reverse Phasing	N.A.	Instant	Phase Reversal	Manual
	Under Current	30% - 90%	1-60 Sec	Under Current	Manual/Multi Attempt
	Over Current	300% - 800%	2-25 Sec	Over Current	Manual/Multi Attempt
	Lock Rotor	200% - 800%	1-10 Sec	Rotor Lock	Manual
	Earth Fault Setting	10% - 100%	0.5-10 Sec	Earth Fault	Manual
	Over Temp.	70°C to 180°C	1-20 Sec	Sensor Fail, Temp High	Auto / Manual

Display	16 X 2 (Black lit LCD Display)
Operating Temperature	0°C to 60°C
Humidity	Up to 95% Rh
Enclosure	F3 Series ABS
Overall Dimensions (H x W x L)	96 x 96 x 80 mm
Mounting Dimensions (L x W)	Flush Mounting - 92 x 92 mm
Approx Weight	400 gms

Suitable for Panels in

Following Applications:

Heavy Duty Motors
Crane Motors
Screw Compressors
AHU Fan Motors
HT Motors
Pump protection
Pump House Automation

Our Other Products

Alarm Annunciator, Motor/Pump Protection Relays, EOCR,
Phase Failure Relay + UV / OV Relays, Voltage/Current/ Frequency/Reverse Power Monitoring Relays,
Earth Fault/ Leakage Relays, Pump Automation Management system & Controllers, Water Level Controller,
Electronic Timers, Power Line Transducers (V/I/KW/Multi-function/DC-DC Isolators or Barrier/Temp/Resistance/Tap position etc.),
Multi-function Meter, Twin Window/Split AC Controller, Bearing temp Monitoring relays(PT-100)