

INSTALLATION INSTRUCTION MANUAL FOR PHASE FAILURE WITH UNDER AND OVER VOLTAGE RELAY S2 VMR7



INTRODUCTION

Thank you for selecting and purchasing MINILEC make 3 ph 3 wire phase failure, under and over voltage relay. Installation instructions will guide you in installing your S2 VMR7 and making the best use of it. It offers protection against -

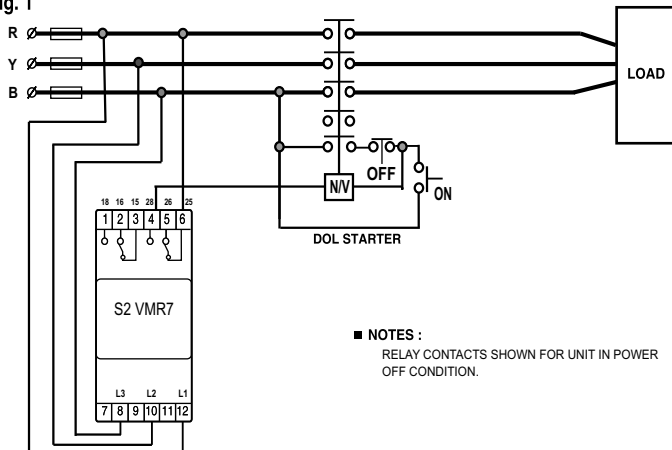
- * Phase Failure condition.
- * Phase sequence reversal condition.
- * Phase Unbalance condition.
- * Under voltage condition.
- * Over voltage condition.

Your S2 VMR7 is an auxiliary relay and it should be used along with the starter only. The effective Working of the unit will depend on efficient working of the starter. Before installing your unit check whether the starter is operating perfectly by starting with the "ON" push button and switching off by "OFF" push button. If the operation of START and STOP are imperfect the starter needs to be serviced. Do not install your unit with faulty starter.

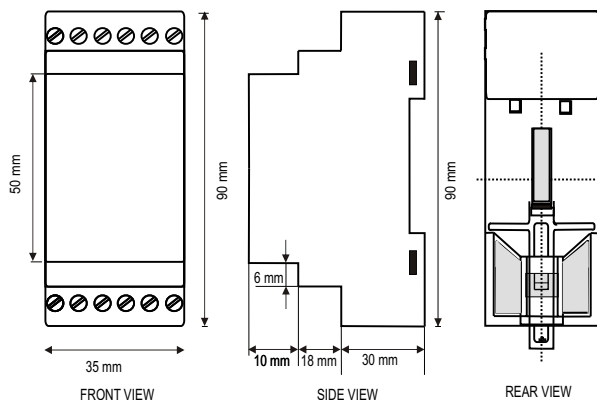
⚠ Note:- If the product is not installed as per guideline given by Minilec, Our company will not be responsible for any wrong connection, damage, Injury, accident, etc.

ELECTRICAL CONNECTION IN POWER & CONTROL WIRING

Fig. 1



ENCLOSURE DIMENSION



SPECIFICATIONS

PARAMETER	DESCRIPTION
1) System Supply Voltage	: 380 / 400 / 415 VAC ± 20 %, 3 phase, 3 wire system
2) Auxiliary Supply Voltage	: In - Built from three phase.
3) Frequency	: 48 TO 63 HZ ± 3%
4) Power Consumption	: 12 VA @ 400 VAC and 25VA(Max.)
5) Output Relay Contacts	: 2 CO.
6) Output Contacts Rating	: 5 AMP, 240VAC [Resistive]
7) Unbalance Trip Setting	: 10% ± 10% of Set Value
8) Under Voltage Trip Setting (Ph - Ph)	: 90 % of System Supply
9) Over Voltage Trip Setting (Ph - Ph)	: 110% of System Supply (380 / 400 VAC) : 109% of System Supply (415 VAC)
10) Trip Time Delay	
* For UB / UV / SP	: 2 - 5 Sec
* For RP / OV	: Instant
11) P. ON / Reset Delay	: 2 Sec ± 1 Sec
12) Set Accuracy	
* For UV & OV setting.	: ± 1 % Of Set Value
* For UB setting.	: ± 10%
13) Resetting	: Auto
14) Reset Gap	
* For UV & OV	: 12 ± 5V
* For UB	: 20% ± 5%
15) Indications	
* Power On (Green)	: ON
* UB/RP (RED)	: UB/RP ,steady for UB flashing for RP
* UV/OV (RED)	: UV/OV ,steady for UV flashing for OV
16) Insulation Resistance (at 500 VDC)	
* Between coil terminal and Contact terminal.	: 10M ohm
* Between contact terminals of same polarity.	: 10M ohm
17) High Voltage Capacity	
* Between terminals and mounting Plates.	: 2.5 K VAC / 50 Hz for 1 Sec.
18) Enclosure	: S2 Series, ABS / PC-ABS.
19) Dimensions (mm)	
* Overall	: 35 X 90 X 60
* Mounting.	: DIN Rail.
20) Weight(Approx.)	: 150 gms.
21) Operating Conditions	
* Temperature	: - 5° C TO + 60°C
* Humidity	: UP° TO 95 % Rh.

WARRANTY

AGAINST ALL MANUFACTURING DEFECTS FOR 18 MONTHS FROM DATE OF SUPPLY OR 12 MONTHS FROM DATE OF INSTALLATION WHICHEVER IS EARLIER

MANUFACTURED BY:

minilec[®]

www.minilecgroup.com

S. NO. 1073/ 1-2-3, AT POST : PIRANGUT, TAL: MULSHI,

DIST: PUNE (INDIA) PIN : 412 111

VERSION 03(03/09/2019)